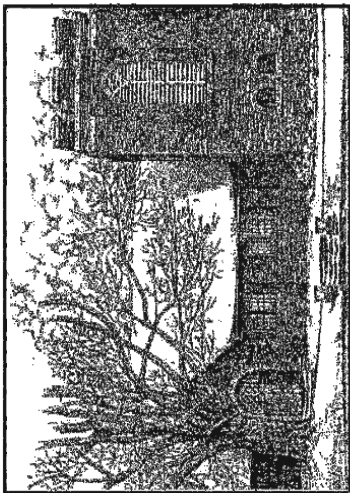


JULY 2009

# Newsletter

SAINT MARY OF THE HILLS • BLOWING ROCK • NORTH CAROLINA



## FROM OUR RECTOR

Oh Lord,  
where do we go with our doubts and fears,  
where can we place frustration and impatience,  
what do we do with confusion,  
discontent,  
futility?

*Lift up your hearts.  
Lift them to the Lord.*

What about stuckness,  
emptiness,  
complacency,  
fantasy,  
distraction?

*Lift up your hearts.  
Lift them to the Lord.*

Really?

Is that what you want?

You want me to place all this in your lap?

What can you do with it?

Maybe I should hold on to it all a little longer.

*Lift up your hearts.  
Lift them to the Lord.*

## FROM OUR MUSIC DIRECTOR

Gregorian chant likely had its origins in the pre-Christian Jewish liturgy. (The chant is called 'Gregorian' after Pope Gregory the Great (c. 540–604), not because he composed the music, but because he played a major role in codifying and disseminating it.) The bulk of the repertoire--the Mass propers and many of the Mass ordinaries--took its final form in the first Christian millennium; it has come down to us basically unchanged. In the words of Dr. William Tortolano, Professor Emeritus of Music and Fine Arts at St. Michael's College in Colchester, Vermont:

*The oldest part of the Church's music is psalmody. We know that these texts were sung in the time of Jesus and the early Church, and we know that Jerusalem Temple. At the Last Supper, Matthew tells us, Jesus sang psalms with his disciples (Matthew 26:30). Saint Paul encouraged the faithful to offer "psalms, hymns, and spiritual songs." (Ephesians 5:19; Colossians 3:16)*

How wonderful that this music is still so fresh and meaningful for us! When we sing the psalm, the *Sursum corda*, and the Fraction Anthem every Sunday at mass, when we sing "Humbly I adore thee" during communion, when we sing "Creator of the stars of night" during Advent--and the list goes on and on--we are reaching backwards through the centuries to connect with our roots. Plato described music as "art so ordering sound as to reach the soul, inspiring a love of virtue." Surely this description is especially apt when applied to the simple, elegant notes and rhythms of chant.

Which brings me to an idea: A chant choir. I've long pondered forming a chant choir that would be able to sing office services--morning prayer, evensong, compline, etc.--using simple, elegant, beautiful chant. No need to feel intimidated by this ancient music; if you can read a collect in unison with your pew mate, you can sing chant together. Remember that in many ways this backbone of liturgy is simply folk music; it was passed down for centuries solely by oral tradition. Anybody interested in talking about this is encouraged to email me or speak with me after Mass some Sunday.

Remember that July's evensong will be sung on the fourth Sunday (26th) at 5.00 PM in the nave.

Keep singing (chanting!),

Jim

## FROM OUR YOUTH DIRECTOR

We all face the challenge of too much to do, and too little time to do it all. We prioritize the best we can, shuffle things around whenever possible, and often face the unfortunate reality that something has to give. We cannot do all of the things we would love to do, and sometimes we can't do everything we need to do! I understand this dilemma. I face it in my own life, and it has a definite effect on the serenity I experience. Sometimes, in trying to

do everything else, I don't make time for God to be in my life. Although I do count myself lucky to have the job that I do, because every time I am with your children, God is present for me.

I say all this because I want you to know that I understand how hard it is to make time for one more thing, to commit to one more activity...and yet, I still ask you all to consider stretching a little more, and giving a little of your time to the youth of this church.

We need you. Alice and I, we cannot do it all alone. We need your support. Encourage your child to come to weekly EYC meetings, or to a special activity for their age group, and then come with them once in a while. Show them you support their participation, show them you are committed to keeping St. Mary's an active part of their lives. Chaperone just one single event for a group of youth that your child is *not* a part of. Get to know the kids you see at communion, or as acolytes. You don't have to be a parent to participate. Maybe I need to emphasize that... **YOU DON'T HAVE TO BE A PARENT TO PARTICIPATE!** Just an adult who cares about the youth we serve.

Please do not hesitate to contact me with any questions you may have, or to talk about the youth programs.

Yours, with blessings,

Katy

## FROM OUR DEACON

Friends,

I want to tell you briefly about two things, both of which are about learning. One has already happened: the



Mission and Ministry Conference. On Saturday, June 6, six of us St. Mary's folks attended the "M&M" Conference which is held each year in Asheville in early June. Susan Fraser, Betty Green, Annie Hellen Thomas, Mary Ellen Raulerson, Diana White, and I enjoyed our time together at the conference and learned a lot along the way. Attending diocesan workshops and learning opportunities is a wonderful way to strengthen our ties beyond our parish to include our diocese as well. If you get a chance to attend next year, take it!

Secondly, I want to remind you of an opportunity to explore ways that God may be calling you to deeper engagement in deeper ministry. Beginning Wednesday morning, July 8, and continuing over seven successive Wednesdays, I will lead a workshop at St. Mary's on the topic "From Discernment to Ministry." Each of the seven sessions will run for one hour, from 10:30 to 11:30 AM.

The Daughters of the King will be participating in the workshop, and they invite other parishioners to join with them. Just bring yourself and also something on which to write, such as a journal. All other materials will be supplied each week. Let me know if you plan to attend so

that I can have enough materials on hand. )

By the way, at the end of June, my 10-month internship with you is halfway over. I cannot believe how quickly five months have passed, how much I have learned, and how much I love this church!

Thank you for all your kindness,  
Melissa

## AROUND THE PARISH

### VESTRY HIGHLIGHTS (May 19, 2009)

(Note: These appear after the minutes are approved. Complete minutes are posted in the Parish Hall.)

Year-to-date income through April 30 is \$139,577, with expenses running at \$149,671. Forty percent of pledges have been collected with 49 percent of the year passed.

Susan Fraser has resigned as Flower Guild Chair. Becky Johnson will replace Judith Williams as a seasonal vestry member. The Tour of Homes supplement won third place from the North Carolina Press Association.

Submitted by Pam Ayoub, Clerk

### SUNDAY SERVICES

<b>Morning Prayer</b>	7:20 AM
<b>Holy Eucharist</b>	8:00 AM
<b>Adult and Children Sunday School:</b>	9:00 AM
<b>Holy Eucharist (Incense July 5)</b>	10:10 AM
1st Sunday - Unction (anointing with oil for healing) follows both services.	
<b>Evening Prayer</b>	5:00 PM

### MID-WEEK SERVICES

Monday-Thursday	<b>Morning Prayer</b>	8:30 AM
Monday- Wednesday	<b>Evening Prayer</b>	5:00 PM
Thursday	<b>Evening Prayer</b>	4:45 PM
Wednesday	<b>Holy Eucharist and Unction</b>	12:00 PM

### SPECIAL SERVICES

**Sam Tallman** will present the sermon on Sunday, July 12, at 10:10 AM.

**Melissa Eggers** will present the sermon on Sunday, July 19, at 10:10 AM.

**Evensong** - Sunday, July 26, at 5:00 PM (Incense)

### UPCOMING MEETINGS AND EVENTS

**Wednesday Book Study** - Study of *Mystical Hope* by Cynthia Bourgeault begins July 1, at 1:00 PM, Sam Tallman, facilitator

**Inquirers' Classes** - Start Sunday, July 5, at 9:05 AM

**ECW Meeting** - Tuesday, July 7, at 6:00 PM

**"From Discernment to Ministry" Workshop** - Begins Wednesday, July 8, at 10:30 AM, for 7 sessions

**Parish Leaders' Roundtable** - Sunday, July 12, at 1:00 PM - a discussion regarding the 2010 budget

**Executive Committee** - Wednesday, July 15, at 3:45 PM

**Vestry** - Tuesday, July 21, at 5:30 PM

**Men's Breakfast** - Thursday, July 23 at 7:30 AM

**Patron's Party** - Thursday, July 23, 6:30 to 8:30 PM

**Tour of Homes** - Friday, July 24, 9:00 AM to 2:00 PM

**Rick on Vacation** - beginning Monday, July 27, returning

Monday, August 10

### ANNUAL PLANTERS

Thanks to those who planted annuals in the rain and in record time this year: Nioucha Branstrom; Vicky Duckworth, Frank Fary, Betty Kinzler and Annie Hellen Thomas. They started at 10:00 AM and were finished before Noon. Please join us next year (or annually!) to plant our annuals.



If you would be willing to help water plants during dry spells, please be in touch with Meg Fary at 295-0442 or [ffary@alumni.duke.edu](mailto:ffary@alumni.duke.edu).

### MARYFEST COMING IN AUGUST

Please mark August 16 on your calendars for MaryFest--an evening with dinner and a special program, including entertainment by our talented choir again this year. The festivities will begin after 5:00 PM Evensong, where we will celebrate our Patron Saint, The Blessed Virgin Mary. This special evening, sponsored by the Stewardship Committee, is a thank-you to all of you for your ministry at St. Mary of the Hills. Watch for more details in the coming weeks!

### NEED SOME HELP THIS SUMMER?

Some of our young people are looking for jobs during their summer vacation. They have lots of energy and enthusiasm. Let's support them!

\*Could you use a Helping Hand? Need your car washed? Maybe some yard work done? Need a babysitter? Give me a call and let me know how I can help you. Just contact **Spenser Hallmark**: (828) 260-5256 or (828) 295-3738.

\*Please call **Megan Lawler** to babysit or pet sit this summer through August 15. References available. My phone numbers are: Home 295-0531 Cell 406-0289.

\*The world's greatest babysitter. Ask anyone. Your kids will thank you! Contact **Jordan Hallmark** at 828-773-1644 or 828-295-3738.

\***Rachel Capen** would like to do yard work, house cleaning, babysitting, pet sitting, etc. Call her at 828-783-8145. She has her own transportation.

## TOUR OF HOMES

### UPDATE ON THE TOUR OF HOMES

Friday, July 24, 9:00 AM to 2:00 PM

Lots of folks are working hard to make the Tour of Homes as successful as possible to raise money to give back to the community in the form of outreach because Christ calls the church, and by definition, each of us, to serve those in need.

Tickets for the Tour itself are \$25, available at the church office now, at the Blowing Rock Visitor's Center now, and on the church lawn the day of the tour. The

hours for the Silent Auction will remain the same... bidding can begin as soon as it is set up (8:30-9:00 AM) and end sharply at 3:00 PM.

The Hayes Performing Arts Center has graciously agreed to allow us to use their parking lot off of the 321 bypass as a staging area, and transportation will be provided from that site to the church to begin the Tour.

The Patron's Party will be at the home of Bill and Sharon Battaglia. This is a beautiful new home exquisitely decorated to have a warm mountain feel. It will be 6:30 to 8:30 PM on Thursday, July 23. The party is limited to 150 people. At this writing there are a few spots left but they are going fast, so act quickly to write a check to St. Mary's with Patron's Party in the subject line and send it to Bo Henderson, P. O. Box 746, Blowing Rock, NC 28605

There are four homes on the tour. They reflect the best of "old" and "new." "Timbertops" is an older home, built and owned originally by the Broyhill family, (Richard Nixon once stayed there!), that is being updated and re-decorated by the new owners. It has spectacular long-range gorge views. The second home, "The Generation Gap," is newly renovated as a weekend retreat with new kitchens and bathrooms, all with an updated "Mountain House" look. The third house, "Do-Hi Cottage" is a new house decorated in a "mountain style" with a mixture of antiques and reproductions. It's a house on three levels with five bedrooms and baths. The wall decorations reflect the owners' passions for art and hunting. The fourth home, "Tall Pines II", a small gem, is a newly remodeled Mayview cottage. While the beautifully-decorated interior features some of her very special Chinese antiques brought back from her many trips to China, the large lot that backs up to the Glen Burney Trail has been spectacularly landscaped. Multi-leveled decking and an inviting Pergola provide a place to relax and entertain.

Volunteers are still needed! Select the area in which you would like to work and contact the Chair or Co-Chair. Areas still in need of volunteers:

**Bake Sale:** Greta Wilson (295-8047), Chair and Jane Milner, Co-Chair. Be sure to donate home-baked goods as well as volunteer to staff the food tent.

**Cookbook Tent:** There aren't many cookbooks left, be sure to get yours early and volunteer to help Meg Fary (295-0442) and Marge Barrett sell the rest.

**Docents:** Betty Green (295-9409), Chair, spend the day in the nave telling folks all the wonderful things about St. Mary's

**Drivers:** Gary Gloster (295-4086), Chair, Sterling Hutcheson, Co-Chair: with able assistance from Joe Raulerson and Alex Hallmark, drivers are always needed!

**Flowers:** Joyce Gibson (295-6406), Chair, Alice Roess, Co-Chair - Folks are needed to pick and gather flowers.

**Hostesses:** JoAnn Hallmark (295-3738), Chair - Head Hostesses have been selected, but there are still needs for hostesses to man individual rooms.

**Silent Auction:** Helen Fabry (295-3271), Chair, Debbie Jones, Co-chair - Solicitors and workers on the day of the tour are always needed! Bring in all those treasures you've been saving to donate for the auction.

**The Golden Needle:** Iris Caldwell (295-0321), Chair, Pam Ayoub and Annie Hellen Thomas, Co-Chairs - Call to donate all those beautiful hand-made items you've been working on all winter.

Areas where the work is finished or already staffed:

**Advertising Supplement:** Judy Domer, Chair, Nancy Hutcheson, Judy Gloster and Betsy Klein, with soliciting help from Pat Fountain and Lynn Hubbard. Look for the supplement in all regional newspapers July 2-3.

**House Selection Committee:** Will Merrill, Joellyn and Bill Gibbons - Just give them a big "thank you" when you see them as their work is done until next year!

**Lunch:** Susan Morgan (265-0047), Chair

**Publicity:** Will Merrill

**Tickets:** Beth and Craig Church

We are grateful to the folks at The Best Cellar who have agreed to donate the lunch. It will be available for purchase in the Parish Hall for \$10.

Call to volunteer your services for any of the above areas. Sign up in the foyer at church on the sign-up sheets provided, or contact one of the following Tour of Homes leaders. Judy Domer (828-963-7507), Chair; Nancy Hutcheson (828-898-9427); and Judy Gloster (828-295-4086), Co-Chairs.

## PARISH PEOPLE

### WELCOME, ANNE AND BLAKE!

This month we are welcoming newcomers who have already become quite involved in our parish family. They are Anne and Blake Donovan, high school sweethearts from Homewood, Alabama. Both attended colleges in North Carolina.



*Anne and Blake Donovan*

Blake is now an ASU graduate student in Physics and is working at Borg Warner in Asheville for the summer. Anne is a Salem College grad and worked for their Admissions Office until the couple's November 22 wedding.

Anne says finding the right church was very important to them. They were married in the Episcopal Church, and Anne is exploring a very strong call to the ministry and is in the early stages of discernment. She says, "The first time I attended St. Mary's, I was warmly welcomed, introduced around, and invited to learn more about the choir." Blake was sick that Sunday and had to stay home. Anne says when she got home he saw the smile on her face and said, "I guess you found our church!" They enjoy the traditional service and our beautiful sanctuary. Also, it meant a great deal to them to have Fr. Rick visit them soon after they came to St. Mary's. Anne is now a part of our choir and loves to sing--especially in worship. Both Anne and Blake volunteered during the summers at a camp for special needs adults and teenagers--Camp McDowell, the Episcopal Diocese of Alabama's retreat center. This is where Blake proposed to Anne, and they

say that being part of this camp has been the most meaningful thing they do every year.

Rick asked Anne to tell us about her Lenten devotion. This is what she wrote:

*I am still in the early stages of my relationship with the Bible. I have been an Episcopalian all of my life and studied religion in college, but have still not read the entire Bible for myself. That is what inspired my Lenten devotion. Instead of giving up chocolate or alcohol or carbs, I took on faithfully and contemplatively reading the New Testament epistles. My college roommate, a Baptist-turned-evangelical-Presbyterian took on this devotion with me. We read our planned text and met weekly over dinner to discuss what stood out to us (as noted in our reading journals). It was wonderful to experience the epistles with my friend because even though we didn't always agree, we were able to have an open dialogue about what caused us to struggle and what touched our souls within the safety of love and friendship. The spiritual growth that accompanied this Lent made it the absolute best yet. I look forward to continuing our readings into the Book of Revelations. I'm sure my friend and I will have plenty to discuss!*

Thanks, Anne, for sharing this with us. We are very happy that you and Blake have come to St. Mary's!

## THE MINISTRIES

### The Youth

#### Episcopal Youth Community-EYC

EYC will begin meeting *weekly* during the 2009-2010 school year. We will meet every Sunday after church at 11:30 AM for approximately an hour to an hour and a half, depending on the activity planned for that day. Start marking your calendars now! You are ALWAYS welcome to BRING A FRIEND! Our first EYC will be held on September 6.

#### Parent Dinner

MARK YOUR CALENDARS NOW! The Annual Parent Dinner for all parents of current youth group members is scheduled for Friday, August 14, at 6:30 PM. It is so important that you join Alice and Katy for this event. We will be discussing the coming year's plans, our goals for the expansion of youth group, and the challenges we face as youth ministers in a relatively small parish. We will open the floor for questions, suggestions, and any concerns you may have. We will also use this time to update our database information so that we can more adequately communicate with you. There will be supervision in the nursery, so if you need to bring your small child you may. However we do ask that this be a *PARENTS ONLY* event. The dinner is potluck: volunteers are needed to provide salad, one or two vegetable side dishes, and dessert. Alice and Katy will be cooking the main course for you. PLEASE RSVP SO WE CAN AVOID WASTE.

#### Senior High Lock-In

The first lock-in of the school year has been scheduled for Friday, August 21. We will be joining the senior high youth from Faith Bridge Methodist and Rumble Presbyterian. You may bring a friend, and the cost is \$10 per person. We will give you more details as we know them...but it is going to be FUN!

#### ATTENTION NEW ST. MARY'S PARENTS

If you are new to St. Mary's and have not been receiving postcards and flyers in the mail from the Youth Director, or have not been receiving emails regarding youth events, please be in touch with Katy Abrams at [junebugnc@gmail.com](mailto:junebugnc@gmail.com) with your contact information, and the full name/school year/birthdate of your child(ren). We don't want you or your child(ren) to miss out!

### Episcopal Church Women

#### ECW News for July

We had a great time of fellowship and fun on June 2 at the ECW Welcome Back Picnic. Many thanks to all who attended, and to the five fabulous volunteers from Men's Breakfast who grilled, bartended and helped with set-up and clean-up.

We will gather again on Tuesday, July 7, at 6:00 PM for a light dinner and to prep for the Tour of Homes. Dale Shelton will also share stories and pictures from the St. Mary's mission trip to Panama last March. Please sign up in the Fellowship Hall to bring a salad, bread or dessert. All women of the church are invited; please join us and bring a friend!

From Christine Anderson

### Stewardship

#### Steppingstones

I want to thank those of you who attended our June 7 Planned Giving Forum. Orian Carter did an outstanding job helping us to understand the various ways that we can plan our giving to St. Mary of the Hills. We are all familiar with 'intentional financial giving' on a weekly, monthly, quarterly or annual basis. It was interesting, however, to learn that giving to the church can be set up in such a way as to benefit one's own financial picture, as described here by one of our parishioner families at the Forum:

*We used a feature of the tax laws that expires this year, but until the end of the year, allows a contribution to a qualified charitable organization by a distribution from an IRA. The distribution is made directly to the charity and no income taxes are payable on the amount distributed. Because no taxes are paid by the IRA owner, the contribution is not tax deductible, but it may improve one's cash flow and reduce taxable income as well.*

We also learned that there are a variety of ways that we can support St. Mary's during our lifetime, as well as after our death, through instruments such as Bequests, Endowments, Gift Annuities and Trusts. This can be a wonderful way to remember and honor a beloved family

member's life when they die, or our own lives while we still live. This gift can be a way to ensure that a ministry that we care about deeply at St. Mary's will continue to thrive. Examples might include funds to support the needs of our music program, or liturgical supplies, Christian education, or outreach programs. What follows is another example by a parishioner family who shared their story at the Forum:

*We have recently revised our wills and included St. Mary's as a recipient of a portion of the estate. The will specifically states that an Outreach Endowment should be established at St. Mary's and that the annual income from that endowment should be distributed equally among Hospitality House, Hunger and Health Coalition and OASIS. It's a simple addition to any will and will provide a lasting benefit to the nonprofits involved.*

If you have questions or wish to know more from either of these families, you can contact me by email [muskay@skybest.com](mailto:muskay@skybest.com) or by phone 336-846-1596, and I will pass your name and contact information on to them. Speaking on behalf of Fr. Rick and the Stewardship Committee, I hope this information has inspired you to think further about opportunities to make an important difference.

*From Kay McCloskey, for the Stewardship Committee*

## Environmental Concerns

### Bread of Life III

Whether grace is said before a meal or not, it is good audibly or silently to take a moment to be grateful, remembering that if no food were available the result would be very personal: hunger, then starvation perhaps leading to death. Discounting a skipped meal or one-day fast, I have never experienced sustained hunger, probably true for almost anyone likely to read this newsletter.

Yet, in 2008 about 850 MILLION people -- almost three times the U.S. population -- went hungry every night<sup>1</sup>: one in every seven of the world population. Given the worldwide economic problems, be assured that tonight that number is substantially greater<sup>5</sup>.

Of the 356 billion pounds of edible food available in the U.S. in a recent year, almost 91 billion pounds, or 25%, was lost as home/restaurant wastage<sup>2</sup>. Adjusted for that and retail spoilage, daily per capita availability of food in the U.S. still was 2,775 calories, or about 20% more than the average adult needs to take in per day.

Worldwide hunger, including about 3.5% of the U.S. population<sup>3</sup>, is due to many interacting causes, such as avarice, apathy, bad management, the sheer scale of the problem, and land degradation. Especially in poorer countries, bad farming practices and the use of inappropriate land are wreaking havoc on the world's environment overall. Land is being pressed into unsustainable production levels, especially in semi-arid areas, or clear-cut in the tropics for a few years of grazing cattle for hamburgers. What had been soil makes its way downstream and on to

oceans, and the loss of vegetative cover contributes to atmospheric CO<sub>2</sub> increase. For example, the past 25 years has seen 23% decrease in per capita food production in Africa due largely to soil erosion and other land degradation<sup>4</sup>.

We should remain keenly mindful of the luxury in which we live. As a child in the mid-20th century, whether my family was having poke salet and cornbread or "Tennessee Chicken" (fried tripe) and beans, I was instructed to "Clean your plate. Remember all the starving children in China." The contrast between what is available for my plate and the number of hungry people has only increased since then.

<sup>1</sup>UN Development Programme Annual Report 2008

<sup>2</sup>information from USDA Economic Research Service

<sup>3</sup>World Hunger Education Service

<sup>4</sup>UNICEF, UN Millennium Project

<sup>5</sup>This was written on July 7. On July 19 the UNFAO released an estimate that approximately 1 billion people are hungry, the increase over last year due largely to the worldwide economic downturn.

*From Ken McKinney*

## Outreach

### Second Harvest

During the month of May, volunteers from St. Mary of the Hills Episcopal Church have delivered **3,160** pounds of salvage food from the Blowing Rock Food Lion and **65** pounds of salvage food from Woodlands Barbeque to the Hospitality House.

## FROM LAKE LOGAN

### Retreats for a Retreat (Lake Logan)

Would you like to have a chance to win a week-long trip for two, including airfare, at an exclusive villa in St. Bart's for a mere hundred dollars? Would you like to attend an elegant cocktail party in Asheville for the raffle for the St. Bart's trip, plus participate in a silent auction to bid on a wide variety of other beach houses, mountain retreats, spa and golf packages, and a three-day stay in New York City?!

Just purchase one raffle ticket for "Retreats for a Retreat," a fundraiser that will benefit the Lake Logan Annual Fund as well as help pay down the debt from the original purchase. You can win the retreat of your dreams, and help our diocesan dream at the same time.

Tickets are \$100 each; each one includes admission for two people to the posh party in Asheville on August 30. Buy yours today from Marjory Holder (262-3450), Bo Henderson (295-9494) or Cobb Milner (295-4410)!

Chances of winning the grand prize are 1:1000--and your odds of having a great time and feeling good about yourself for supporting Lake Logan and Camp Henry are 100%!

*From Cheryl Smith, Lake Logan Development Director*



### **JULY BIRTHDAYS**

- 1 Adelaide Craver
- 3 Taryn Barnes  
Jack Horner
- 4 Marg McKinney
- 5 Roy McCraw
- 6 Andrew Hill
- 7 Hannah Cameron  
Mallory Coston  
Ed Springs
- 9 Bob McCloskey  
Annie Perry
- 11 Martha Jones  
Betsy Klein  
Beth Lawler
- 12 Floyd Domer  
Bel Evans  
Gideon Jones
- 14 Joe Dulaney  
Benjamin White
- 16 Monica Styron  
Charlie Sizer, Jr.
- 17 Charles Davant, IV  
Blackie Nelson  
Joe Waters
- 18 Jim Butner
- 20 David Dauphine
- 21 Christina Hillis McDonald  
Howard Pitt  
Kay Snow
- 23 JoAnn Gibbs
- 25 Ann Furr
- 26 Bernie Keele
- 27 Bonnie Henley  
Joyce Mason
- 29 Bill Bauknight  
Robert Browning  
Lisa Stripling  
Denise Story

### **JULY ANNIVERSARIES**

- 16 Rob and Gae Best
- 20 Bill and Jorgann Rogers
- 25 Bill and Emily Furr
- 30 Jan and Perry Mixer

### **HAGIA SOPHIA**

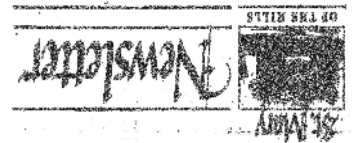
Just in case you missed the showing of the beautiful Hagia Sophia (Holy Wisdom) at the home of Kay and Bob McCloskey on Sunday, June 21, here is a photo for you. Thanks to Kay and Bob for their hospitality and to our talented Alex Hallmark, who created this beautiful statue.



**LOOK FOR LOTS OF PHOTOS OF  
THE 2009 TOUR OF HOMES IN THE NEXT NEWSLETTER**

*Address Correction Requested*

Post Office Box 14  
Blowing Rock, North Carolina 28605



The mission of the people of St. Mary of the Hills Episcopal Church is to grow Spiritually in Christ through Worship, Stewardship, Study, Service and Fellowship.

### Staff

The Rev. Richard C. Lawler, Rector  
Katy Abrams, Youth Director  
Dr. James Bumgardner, Director of Music  
Beth Postlethwait, Administrative Assistant.  
Craig Church, Financial Secretary  
Bill Stroh, Sexton  
Nursery Attendants: Tanya Price, Kathy Holman, Natalie Bovino, Megan Lawler  
The Rev. Richard DeMott, Adjunct Clergy

### The Vestry

Marjory Holder, Senior Warden  
Bob Miller, Junior Warden  
Orian Carter, Treasurer  
Pam Ayoub, Mary Ellen Raulerson, Clerks  
Bill Bauknight, Judy Domer, Betty Green,  
Alex Hallmark, Susan Fraser, Paul Karseras,  
Frank Thomas, Derald West, Judith Williams

### Department Chairs

Altar Guild - Luella Rundell  
Stewardship Committee - Kay McCloskey  
Flower Guild - Susan Fraser  
Nursery Director - Donna Devereux  
Environmental Concerns -  
Personnel Committee -  
ECW President - Susie Morgan  
Prayer Chain - Olivia Knight  
Landscape Committee - Meg Fary

Missions Committee -  
Ushers - Leslie Barnes  
Foyer Groups - Beth Lawler  
Sunday School Director - Michelle Capen  
Chalice Ministers - Beth Postlethwait  
Lectors - Kathy Dacchille  
Greeters - Sabine Miller  
Friends of St. Mary - Olivia Knight  
Newcomer Committee - Iris Caldwell  
Acolytes - Catherine Carter  
Publicity -  
Daughters of the King - Betty Green  
Parish Wellness Committee - Iris Caldwell  
Outreach Committee - Judy Domer  
ERD - Ginny Robards  
Hospitality House - Susie Greene  
Coffee Minute - ECW  
Web Master - Perry Mixer:  
[mixer@mindspring.com](mailto:mixer@mindspring.com)

### Newsletter-Deadline 20th of Month

Meg Fary - Editor  
[ffary@alumni.duke.edu](mailto:ffary@alumni.duke.edu)  
Distribution - Buddy and Iris Caldwell

### St. Mary of the Hills Episcopal Parish

Office Phone: 828-295-7323

Fax: 828-295-5086

E-Mail:

[rick@stmaryofthehills.org](mailto:rick@stmaryofthehills.org)  
[beth@stmaryofthehills.org](mailto:beth@stmaryofthehills.org)  
[info@stmaryofthehills.org](mailto:info@stmaryofthehills.org)  
Website: [stmaryofthehills.org](http://stmaryofthehills.org)

### Church Office Hours

Sunday, 7:30 AM - 3:30 PM

Monday-Thursday  
9:00 AM - 5:00 PM

*(Closed Fridays and Saturdays)*